



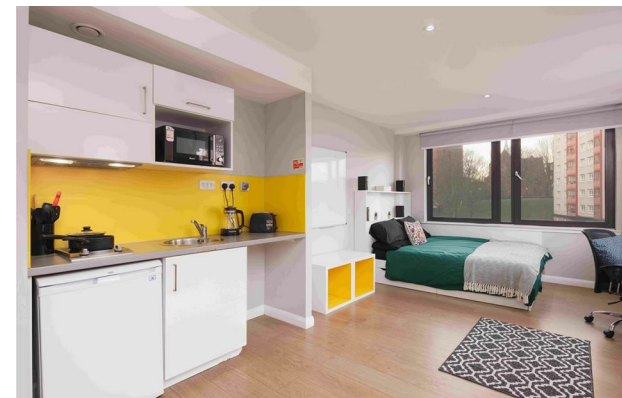
Merchant Studios | | Glasgow | G4 0AJ

£311 Per week



Merchant Studios |
Glasgow | G4 0AJ
£311 Per week

GLASGOW | STUDENT | SEPTEMBER



- Social and study spaces
- 24-hour gym
- High speed Wi-Fi
- Utilities including water and heating
- Strong community
- Outdoor courtyard
- Onsite laundry facilities
- Contents insurance
- Excellent location
- Student only

Energy Efficiency Rating		Current	Potential
<i>Very energy efficient - lower running costs</i>			
(92 plus) A			
(81-91) B			
(69-80) C			
(55-68) D			
(39-54) E			
(21-38) F			
(1-20) G			
<i>Not energy efficient - higher running costs</i>			
Scotland		EU Directive 2002/91/EC	

Lower Ground Floor
27 Ridley Place
Newcastle upon Tyne
Tyne and Wear
NE1 8JN
0191 6403450
info@propertybynest.co.uk